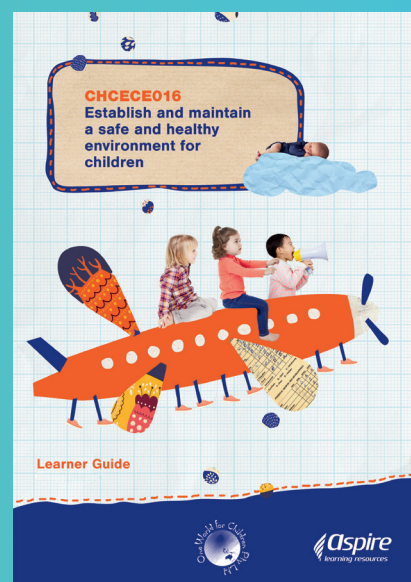
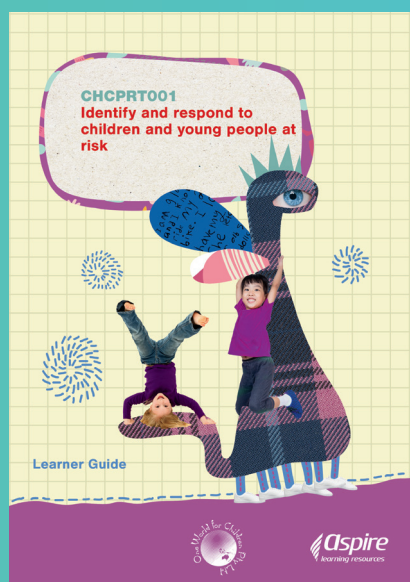
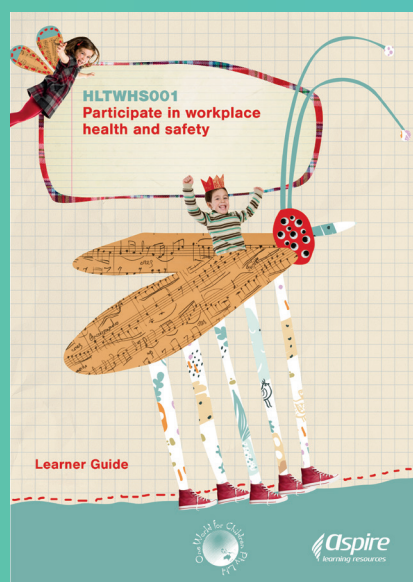


WORKING
TOGETHER
SINCE
2006

REVIEW NOW!

Learning and Assessment Resources for the New CHC30119 & CHC50119 Qualifications in Early Childhood Education and Care

- Co-developed with leading childcare practitioners and trainers
- Comprehensive coverage of unit requirements and standards
- New assessment tools developed in consultation with compliance experts
- FREE mapping documents show content coverage against unit of competency
- Bursting with realistic workplace examples
- Fresh new format and design




Available soon for your training
and assessment needs

- Learner guides
- Assessment support packs
- PowerPoint slides

- Work placement journals
- Competency mapping guides

To review and see a sample, please contact us

aspirelr.com.au | 03 9820 1300

[in](#) [t](#) [y](#) @aspirelr | Purchasing our resources helps fund the  Aspire Foundation



Aspire
learning resources

Proposed units of competency

(Qualification, codes, units of competency and titles will be confirmed upon endorsement of the new qualifications)

BSBLDR502	Lead and manage workplace relationships
BSBSUS501	Develop workplace policy and procedures for sustainability
CHCCEC056	Work effectively in children's education and care
CHCDIV001	Work with diverse people
CHCDIV003	Manage and promote diversity
CHCECE030	Support inclusion and diversity
CHCECE031	Support children's health, safety and wellbeing
CHCECE032	Nurture babies and toddlers
CHCECE033	Develop positive and respectful relationships with children
CHCECE034	Use an approved learning framework to guide practice
CHCECE035	Support the holistic learning and development of children
CHCECE036	Provide experiences to support children's play and learning
CHCECE037	Support children to connect with the natural environment
CHCECE038	Observe children to inform practice
CHCECE041	Maintain a safe and healthy environment for children
CHCECE042	Foster holistic early childhood learning, development and wellbeing
CHCECE043	Nurture creativity in children
CHCECE044	Facilitate compliance in an education and care service
CHCECE045	Foster positive and respectful interactions and behaviour in children
CHCECE046	Implement strategies for the inclusion of all children
CHCECE047	Analyse information to inform children's learning
CHCECE048	Plan and implement children's education and care curriculum
CHCECE049	Embed sustainable practices in service operations
CHCECE050	Work in partnership with children's families
CHCECE054	Promote understanding of Aboriginal and/or Torres Strait Islander cultures
CHCECE055	Meet legal and ethical obligations in children's education and care
CHCINM002	Meet community information needs
CHCPRP003	Reflect on and improve own professional practice
CHCPRT001	Identify and respond to children and young people at risk
HLTWHS001	Participate in workplace health and safety
HLTWHS003	Maintain work health and safety

One World for Children & Aspire Learning Resources have been co-developing resources since 2006



One World for Children:

- Is an industry-based RTO and childcare centre
- Has over 20 years' experience in the child education and care industry
- Brings a whole-child focus to training and care
- Embeds real-life practice and experience in learning resources