

# CHC

Coming  
Soon

# Early Childhood Education and Care

---

CHC30120 Certificate III in Early Childhood Education and Care

---

CHC50120 Diploma of Early Childhood Education and Care

---

# LEARNER GUIDES



Early Childhood Education and Care resources are available for Certificate III and the Diploma of Early Child Education and Care qualifications from the CHC Community Services Training Package.

**Mapped to Competency:** Content is mapped to the elements, performance criteria, performance evidence and knowledge evidence of the unit of competency

**Workplace examples:** Each resource includes realistic and current workplace examples and case studies providing real-life context

**Practice Tasks:** Practice Tasks enable learners to check their progress

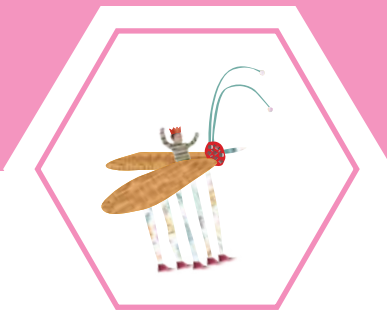
**Topic Summaries:** Summaries at the end of each topic review key learning topics

**Learning Checkpoints:** Learning Checkpoints allow students to test what they've learned

Available in print, eBook or a licensing subscription format.

# ASSESSMENT SUPPORT PACKS

## For the Student



**Practice Assessment Workbook:** The Practice Assessment Workbook includes all Practice Tasks, Case Studies and Learning Checkpoints from the Learner Guide

**Final Assessment Workbook:** The Final Assessment Workbook includes all the Final Assessment tasks, including:

- Questions
- Project
- Observation scenario\*
- Third party report\*

\*where the Unit of Competency requires an Observation be undertaken

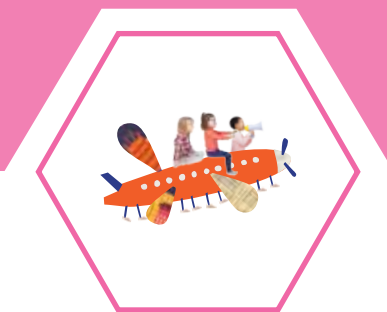
**Supporting documents:** Supporting documents help learners complete the Final Assessment tasks

The Practice Assessment Workbook and Final Assessment Workbooks are in MSWord format for easy use.

---

# ASSESSMENT SUPPORT PACKS

## For the Assessor



**Practice Assessment Marking Guide:** The Practice Assessment Marking Guide includes suggested solutions to all the assessments in the Learner Guide

**Talk with Others:** A Talk with Others section is also included to promote classroom discussion

**Final Assessment Marking Guide:** The Final Assessment Marking Guide includes suggested solutions to the Final Assessment tasks

**Third-Party Report:** The Third-Party Report helps the workplace supervisor observe and monitor the student undertake a task in a workplace setting

**Mapping Spreadsheet:** The Competency Mapping spreadsheet maps the learning content and assessments to each element, performance criteria, performance evidence and knowledge evidence of the unit of competency

**PowerPoint Slides:** PowerPoint slides summarise key concepts and contain live links and additional discussion questions to encourage further learning

**Delivery Plans:** Delivery Plans support the TAS by providing an estimated time to deliver each Topic; suggested training strategies; and discussion topics at the end of each Topic.

# WORK PLACEMENT JOURNALS



Work Placement Journals for:

**CHC30120 Certificate III in Early Childhood Education and Care**

**CHC50120 Diploma of Early Childhood Education and Care**

The Work Placement Journal is a standalone resource that provides an effective way for students to reflect on their professional and personal skills, by combining them into a portfolio that they can refer to when writing their resumé or preparing for a job interview.

- Students record details of their work placement experiences and new skills
- Templates and examples assist students fill in their journal
- The customisable Microsoft Word document can be easily adapted to suit to your learner cohort
- The once-off purchase can be reproduced as often as required

Our Partner

# ONE WORLD FOR CHILDREN



Aspire's Early Childhood Education and Care resources are co-developed with award-winning childcare practitioners and trainers at One World for Children: an industry-based RTO and childcare centre with over 20 years' experience as childcare educators.

One World for Children and Aspire Learning Resources began collaborating in 2006. Together, we develop innovative training and assessment resources that take a whole-child focus and showcase real-life childhood education scenarios. Our comprehensive approach is based on current industry practice and helps students become job-ready for a productive career.

Drawing on a wealth of experience in real work environments, Aspire's resources capture first-class industry knowledge and practices that reflect the passion of leading childcare experts.

# Pricing and Purchasing Options

## Qualifications

**CHC30120 Certificate III in Early Childhood Education and Care**  
Requirements: 17 units – 15 core and 2 electives

**CHC50120 Diploma of Early Childhood Education and Care**  
Requirements: 15 units – 12 core and 3 electives

## Pricing

Print	Price
Learner Guides.	\$18.00 ea
eBook	Price
Learner eBook. To purchase eBooks, visit <a href="http://myconnectshop.campion.com.au">myconnectshop.campion.com.au</a> .	\$16.50 ea
Assessment Support Packs	Price
Available for each title. Supplied as downloadable Word files.	\$550.00 ea
PowerPoint Slides	Price
Available for each title. To purchase, contact Aspire.	\$195.00 ea
Work Placement Journal	Price
One-off purchase. Available for each Certificate III and Diploma qualification.	\$495.00 ea

ISBN	CODE	TP RELEASE *	TITLE	CHC30120	CHC50120
978 1 76075 375 7	BSBSUS511	R7	Develop workplace policy and procedures for sustainability		E
978 1 76075 371 9	BSBTWK502	R7	Manage team effectiveness		C
978 1 76075 383 2	CHCDIV001	R4	Work with diverse people	E	
978 1 76075 387 0	CHCDIV003	R4	Manage and promote diversity		E
978 1 76075 391 7	CHCECE030	R4	Support inclusion and diversity	C	
978 1 76075 395 5	CHCECE031	R4	Support children's health, safety and wellbeing	C	
978 1 76075 399 3	CHCECE032	R4	Nurture babies and toddlers	C	
978 1 76075 403 7	CHCECE033	R4	Develop positive and respectful relationships with children	C	
978 1 76075 407 5	CHCECE034	R4	Use an approved learning framework to guide practice	C	
978 1 76075 411 2	CHCECE035	R4	Support the holistic learning and development of children	C	
978 1 76075 415 0	CHCECE036	R4	Provide experiences to support children's play and learning	C	
978 1 76075 419 8	CHCECE037	R4	Support children to connect with the natural environment	C	
978 1 76075 423 5	CHCECE038	R4	Observe children to inform practice	C	
978 1 76075 427 3	CHCECE041	R4	Maintain a safe and healthy environment for children		C
978 1 76075 431 0	CHCECE042	R4	Foster holistic early childhood learning, development and wellbeing		C
978 1 76075 435 8	CHCECE043	R4	Nurture creativity in children		C
978 1 76075 439 6	CHCECE044	R4	Facilitate compliance in an education and care service		C
978 1 76075 443 3	CHCECE045	R4	Foster positive and respectful interactions and behaviour in children		C




ISBN	CODE	TP RELEASE *	TITLE	CHC30120	CHC50120
978 1 76075 447 1	CHCECE046	R4	Implement strategies for the inclusion of all children		C
978 1 76075 451 8	CHCECE047	R4	Analyse information to inform learning		C
978 1 76075 455 6	CHCECE048	R4	Plan and implement children's education and care curriculum		C
978 1 76075 459 4	CHCECE049	R4	Embed environmental responsibility in service operations		C
978 1 76075 463 1	CHCECE050	R4	Work in partnership with children's families		C
978 1 76075 467 9	CHCECE054	R4	Encourage understanding of Aboriginal and/or Torres Strait Islander Peoples cultures	C	
978 1 76075 471 6	CHCECE055	R4	Meet legal and ethical obligations in children's education and care	C	
978 1 76075 379 5	CHCECE056	R4	Work effectively in children's care and education	C	
978 1 76075 475 4	CHCINM002	R4	Meet community information needs		E
978 1 92246 600 6	CHCPOL003	R4	Research and apply evidence to practice		E
978 1 76075 479 2	CHCPRP003	R4	Reflect on and improve own professional practice		C
978 1 76075 483 9	CHCPRT001	R4	Identify and respond to children and young people at risk	C	
978 1 76075 487 7	HLTWHS001	R4	Participate in workplace health and safety	C	
978 1 76075 491 4	HLTWHS003	R4	Maintain work health and safety	E	
978 1 76075 495 2	GECWPJ3		Work Placement Journal - Certificate III		
978 1 76075 496 9	GECWPL5		Work Placement Journal - Diploma		

\*The R# relates to the Training Package version, for example R1 = Release 1, R2 = Release 2

*Please note: Aspire has not developed HLTAID004 Provide an emergency first aid response in an education and care setting*

Developed in partnership with One World for Children

**W: [aspirelr.com.au](http://aspirelr.com.au) P: 03 9820 1300 E: [sales@aspirelr.com.au](mailto:sales@aspirelr.com.au)**

   **@aspirelr** Purchasing our resources helps fund the Aspire Foundation